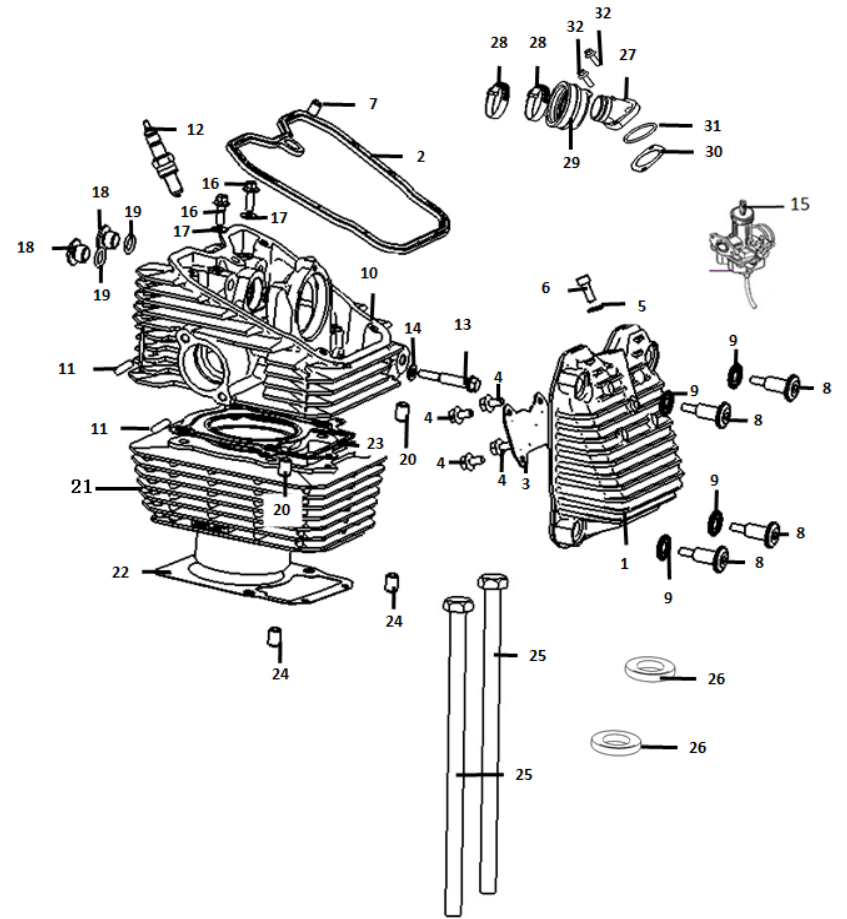
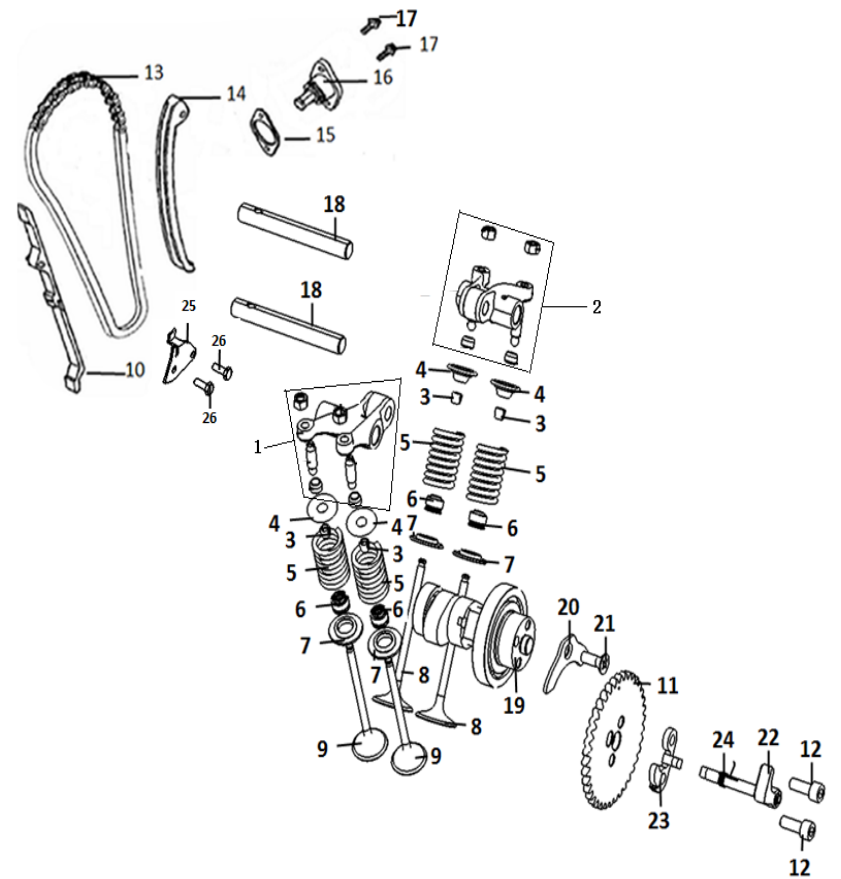


	PART CODE	CHINESE DESCRIPTION	ENGLISH DESCRIPTION
1	100133988	CB250R缸头盖(抛丸钝化)	HeadCover
2	100133998	CB250R缸头盖密封圈	Seal Ring,Of Upper Cover Cylinder H
3	100133994	CB250R油道压板	HeadCoverOilPipe
4	100055592	GB16674小盘螺栓M6×10(兰	Bolt, M6×10
5	100106566	平垫圈(φ6.5×1.5×φ12)	Washer,φ6.5×1.5×φ12
6	100010836	GB70.1螺栓M6×12(兰白锌)	Bolt, M6×12
7	100100867	定位销φ8×12×φ6.3	Dowel Pin,φ8×12×φ6.3
8	100714290	CB250R缸头盖固定螺栓(异	Bolt
9	100102894	Derbi125头盖螺栓缓冲垫圈	Washer
10	100132278	CB250R气缸头组合(M8_58)	Cylinder Assembly
11	100100438	CG125D缸头排气口双头螺	Bolt,M8×38
12	100064166	NC250电喷火花塞(NGK_CR	Spark Plug
13	100100367	CB180D张紧条芯轴螺栓(兰	Bolt
14	100106544	平垫圈(φ8×1.5×φ14)	Washer,φ8×1.5×φ14
15	100300228	NC250化油器(PZ34_拉索带	Carburetor
16	100055589	GB16674小盘螺栓M6×16(兰	Bolt, M6×16
17	100106566	平垫圈(φ6.5×1.5×φ12)	Washer,φ6.5×1.5×φ12
18	100105195	NC250摇臂轴定位螺栓M14	Bolt
19	100107654	O型圈(φ11.8×2.6_氟橡胶)	O-Ring,φ11.8×2.6
20	100031687	定位销φ10×20	Pin,φ10×20
21	100780569	CB300RL气缸体部件(缸标3	Cylinder Block Assembly
22	100778723	PR300气缸体密封垫	Gasket Cylinder Block
23	100749346	CPS250气缸头密封垫组合(Gasket Assy Cylinder Head
24	100010557	定位销φ10×14(RoHS)	Pin,φ10×14
25	100100414	CBB200缸头箱体连接螺栓M	Bolt,M6×119
26	100125679	平垫圈(φ6.2×1×φ12_ST12_	Washer,φ6.2×1×φ12
27	100162766	CB250R进气管(JQ-13)抛丸	Intake Pipe
28	100105385	LY350进气管卡箍组件	Clamp Inlet Pipe

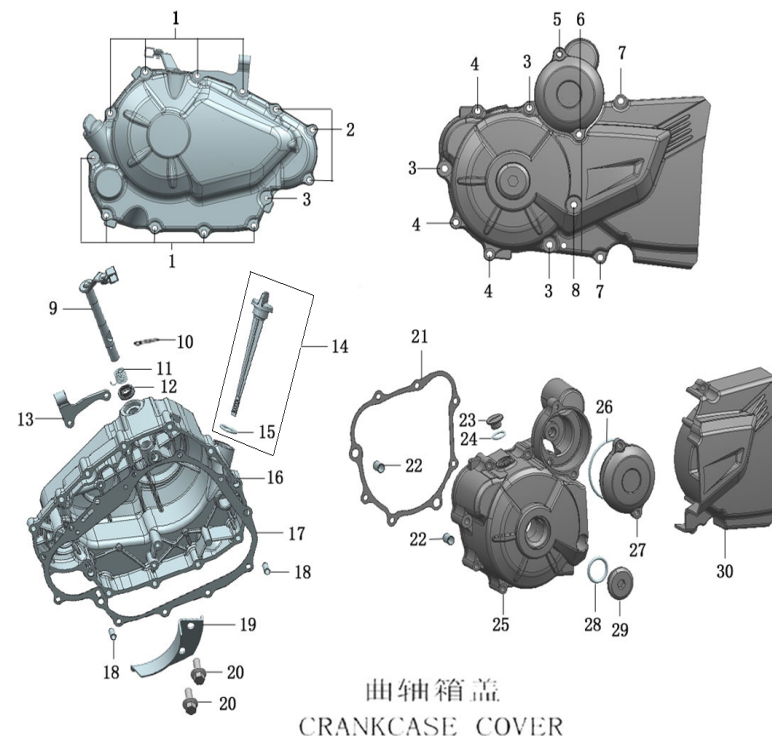


	PART CODE	CHINESE DESCRIPTION	ENGLISH DESCRIPTION
1	100134071	CB250R排气摇臂组合	Rocker Arm Assembly Valve
2	100134070	CB250R进气摇臂组合	Rocker Arm Assembly Valve
3	100200708	YB110气门锁夹	Valve Locker
4	100105306	YB115气门弹簧座(上)	Spring,Seat
5	100135834	CB250R气门弹簧	Valve Spring
6	100105335	YB110挡油罩组合 另加10	Seal Valve Stem
7	100078049	ZY250SR气门弹簧座(下)	Spring,Retainer
8	100134048	CB250R进气门	Exhaust Valve
9	100134047	CB250R排气门	Exhaust Valve
10	100105225	CB200-C链条导向板组合	Guide Plate Chain
11	100134049	CB250R正时从动链轮	Timing Driven Sprocket
12	100010839	GB70.1螺栓M6×20(兰白锌)	Bolt, M6×20
13	100102441	CB200-C正时链条组合(7×10)	Sproket Chain
14	100081747	PR250链条张紧板组合	Tension Plate Assy
15	100104605	CB125D张紧器密封垫	Gasket Tensioner
16	100777952	CB125D张紧器组合(2#_力)	Chain Tensioning Wheel
17	100010837	GB70.1螺栓M6×16(兰白锌)	Bolt, M6×16
18	100134065	CB250R摇臂轴	Rocker Shaft
19	100146198	CB250R凸轮轴部件	Cam Shaft Comp
20	100134052	CB250R凸轮轴承压板	Pressure Plate
21	100111241	GB819.2螺钉M6×12(兰白锌)	Screw, M6×12
22	100134103	CB250R减压阀甩块组合	Swing Piece Assemble
23	100057815	DT190减压阀限位板(2#)	Limit Plate Reducting Valve
24	100057814	DT190减压阀复位扭簧(2#)	Decompression SpRing,Of Camshaf
25	100103276	CB250水冷四气门链条护板	Assembly Chain Protect Plate
26	100011173	GB5783螺栓M6×16(兰白锌)	Bolt, M6×16

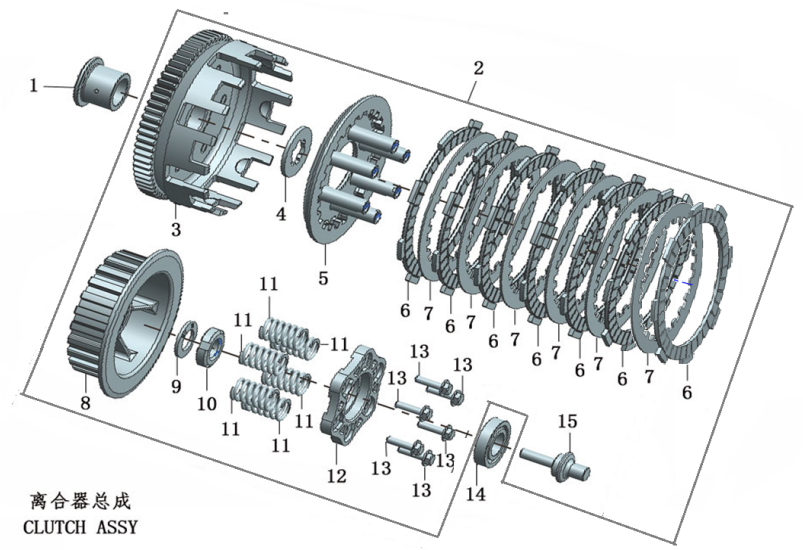


配气机构 VALVE MECHANISM

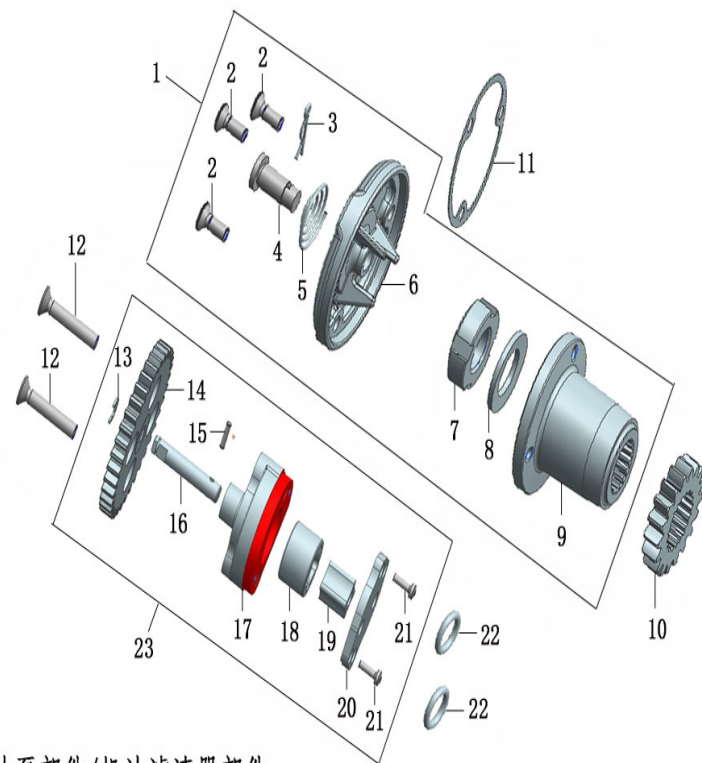
	PART CODE	CHINESE DESCRIPTION	ENGLISH DESCRIPTION
1	100011538	GB16674小盘螺栓M6×40(白)	Bolt, M6×40
2	100055587	GB16674小盘螺栓M6×28(白)	Bolt, M6×28
3	100011540	GB16674小盘螺栓M6×50(白)	Bolt, M6×50
4	100011538	GB16674小盘螺栓M6×40(白)	Bolt, M6×40
5	100055588	GB16674小盘螺栓M6×20(白)	Bolt, M6×20
6	100031959	GB16674小盘螺栓M6×70(白)	Bolt, M6×70
7	100055587	GB16674小盘螺栓M6×28(白)	Bolt, M6×28
8	100011543	GB16674小盘螺栓M6×65(白)	Bolt, M6×65
9	100203159	PZ125离合器操纵臂组合(镀铬)	Clutch Manipulate Arm Combinatio
10	100100636	CB125脚操纵臂卡销(发黑)	Clutch Lever Pin
11	100103443	CB125脚离合器操纵臂弹簧	Clutch Controlling Arm Spring
12	100104756	CB125脚离合器操纵臂油封	Oil Seal 12×22×5
13	100088157	CG200-A金刚沸腾水冷离合	Holder Cliutch Cable
14	100104878	C100机油尺组合(整体式_白)	Oil Ruler Assy
15	100031573	O型圈(φ18×3_丁腈胶)	O-Ring,φ18×3
16	100782133	PR150右盖组合(2#_飞翔款_仅电_白板_抛丸钝化)	Cover Comp Right Crankcase
17	100054996	PR150右曲轴箱盖密封垫	Gasket R.Crankcase Cover
18	100100868	定位销φ8×14×φ6.3	Dowel Pin,φ8×14×φ6.3
19	100053696	PR150机油泵挡板	Baffle
20	100055591	GB16674小盘螺栓M6×12(白)	Bolt, M6×12
21	100054998	PR150左曲轴箱前盖密封垫	Gasket L.Crankcase Cover
22	100010557	定位销φ10×14(RoHS)	Pin,φ10×14
23	100103059	C100小视孔盖(抛丸钝化)	Cap Small View Hole
24	100138362	O型圈(φ13.2×2.65_氟橡胶)	O-Ring,φ13.2×2.65
25	100052682	PR150左盖(普通款_白板_抛	Front Part,L.Crankcase Cover
26	100107810	O型圈(φ62×3_氟橡胶)	O-Ring,φ62×3
27	100052686	PR150双联齿轮盖(白板_抛	Cover Reduction Gear



	PART CODE	CHINESE DESCRIPTION	ENGLISH DESCRIPTION
1	100081730	PR250六档离合器衬套	Sleeve Clutch
2	100718308	CBS250六档离合器总成(富	Clutch Assy
3	100105845	CBS250六档离合器外罩组	Out Case Assembly Clutch
4	100103341	CB125脚离合器花键垫圈	Washer
5	100050125	CG200-A水冷离合器压盘	Pressure Plate Clutch
6	100203044	CG200-A水冷离合器主动 摩擦片(富士摩擦片)	Drive Friction Disk
7	100103422	CG150D离合器从动摩擦 片(六柱)	Outer Friction Disk A
8	100050124	CG200-A水冷离合器中心 套(3#)	Center Sleeve Clutch
9	100103345	CB125脚离合器碟形垫圈(16.5×2×27)	Dish Washer,Clutch
10	100100523	CB125脚机油滤清器螺母	Nut
11	100050122	CB250离合器弹簧	SpRing,Clutch
12	100103373	CG200D-B离合器端盖	End Cover Clutch
13	100100429	CG150D离合器法兰盘螺栓 M5×20(兰白锌)	Bolt,M5×20
14	100010690	轴承(16003)	Bearing, 16003
15	100081727	PR250六档离合器推杆	Pushing Rod Clutch

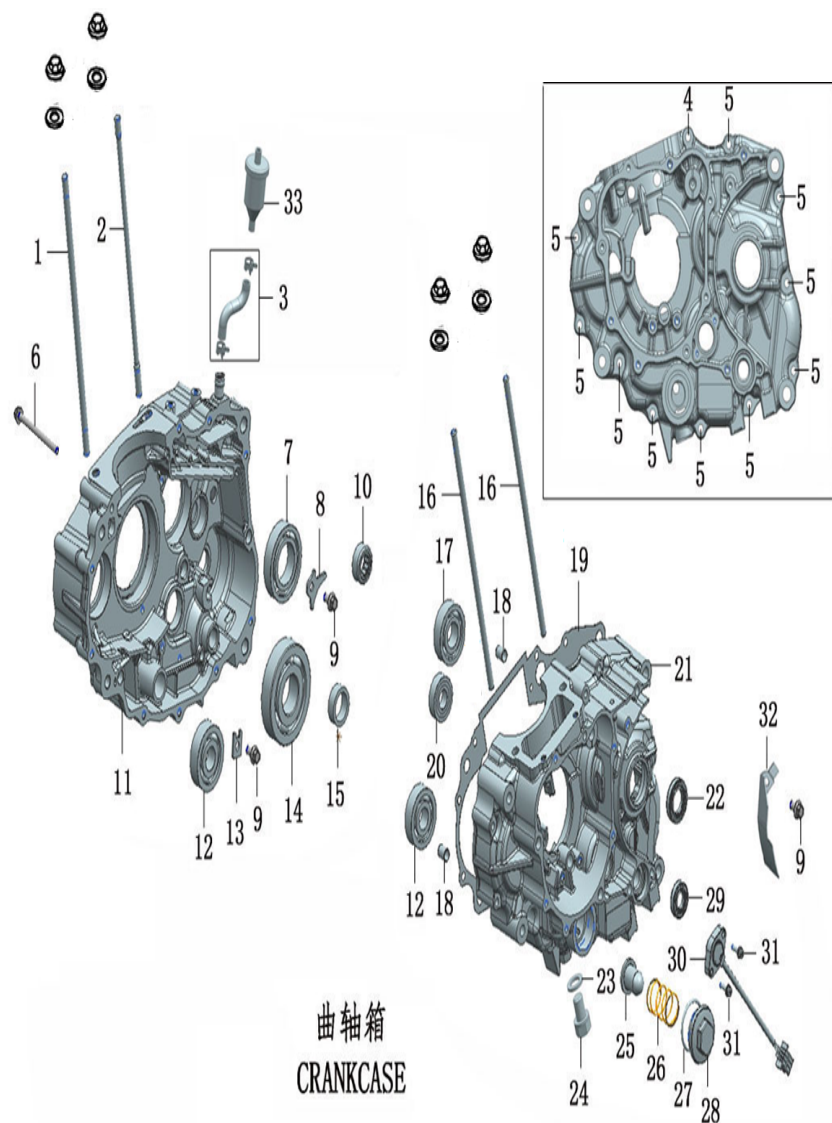


	PART CODE	CHINESE DESCRIPTION	ENGLISH DESCRIPTION
1	100200006	SB125机油滤清器部件(2#)	Oil Filter Comp
2	100010978	GB819.2螺钉M5×12(兰白锌)	Screw, M5×12
3	100104850	CB125脚机油滤清器开口销	Open Pin
4	100104843	CB125脚机油滤清器出油管	Oil Pipe
5	100104844	CB125脚机油滤清器出油管弹簧	SpRing,Oil Pipe
6	100067394	SB125机油滤清器盖(3#_分级过滤)	Oil Filter Cover
7	100100523	CB125脚机油滤清器螺母	Nut
8	100103345	CB125脚离合器碟形垫圈(16.5×2×27)	Dish Washer,Clutch
9	100104846	SB125机油滤清器转子组件	Rotor Ass. Of Oil Filter
10	100100092	CB133机油泵驱动齿轮(21齿)	Drive Gear Oil Pump
11	100104600	SB125滤清器端盖密封垫	Gasket Oil Filter
12	100123472	GB819.2螺钉M6×32(兰白锌)	Screw, M6×32
13	100011110	GB896挡圈5(RoHS)	Retaining Ring, 5
14	100081734	PR250机油泵齿轮组合	Oil Pump Gear Assy
15	100032878	GB119.1圆柱销φ2.5×10	Pin, φ2.5×10
16	100081739	PR250机油泵轴	Oil Pump Shaft
17	100081736	PR250机油泵泵体	Oil Pump Body
18	100081737	PR250机油泵外转子	Outer Rotor Oil Pump
19	100081738	PR250机油泵内转子	Inner Rotor Oil Pump
20	100057559	PR150机油泵盖板	Oil Pump Cover
21	100031811	GB818螺钉M3×10(兰白锌)	Screw, M3×10
22	100107844	O型圈(φ9.4×2.4_氟橡胶)	O-Ring,φ9.4×2.4

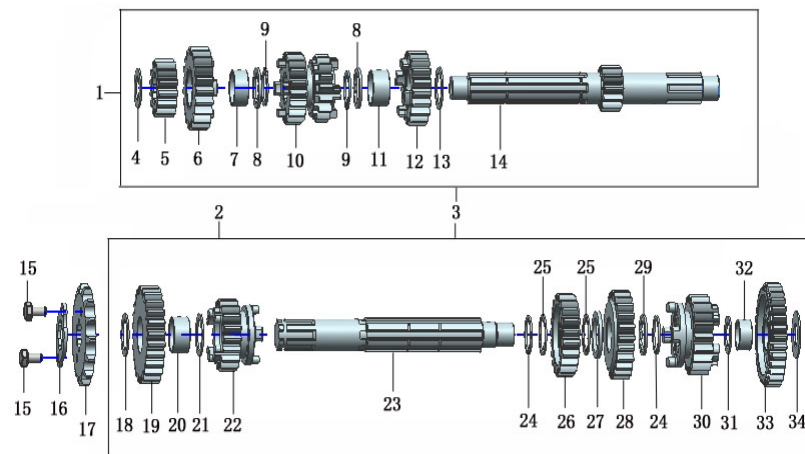


机油泵部件/机油滤清器部件
OIL PUMP/OIL FILTER

	PART CODE	CHINESE DESCRIPTION	ENGLISH DESCRIPTION
1	100146197	CB250R气缸双头螺栓(156n	Cylinder Stud Bolt A
2	100146196	CB250R气缸双头螺栓(2#_1	Cylinder Stud Bolt A
3	100206020	CG250通气管组件(卡箍2个	Pipe Assy
4	100033088	GB16674小盘螺栓M6×85(兰	Bolt, M6×85
5	100011540	GB16674小盘螺栓M6×50(兰	Bolt, M6×50
6	100011543	GB16674小盘螺栓M6×65(兰	Bolt, M6×65
7	100101185	轴承(6006×2/20_C3)	BeaRing,(6006×2/20_C3)
8	100205818	CB250六档主轴轴承压板1	Pressure Plate Bearing
9	100055591	GB16674小盘螺栓M6×12(兰	Bolt, M6×12
10	100101164	轴承(NK15×27×12_苏特WJL	Needle BeaRing,(Nk15×27×12)
11	100780135	PR300右曲轴箱组合(抛丸钝	Right Crankcase Block
12	100777105	轴承(6303/4PC3)	Bearing,(6303_C3)
13	100053701	PR150平衡轴轴承挡板	Baffle
14	100066540	轴承(TM63/28X1E2/P5)	BeaRing,(TM63/28X1E2/P5)
15	100101062	轴承(HK21×28×10_滚针)	Needle BeaRing,(Hk21×28×10)
16	100100302	SB125气缸双头螺栓B(3#_1	Cylinder Stud Bolt B
17	100100951	轴承(6204_C3)	BeaRing,(6204_C3)
18	100010557	定位销φ10×14(RoHS)	Pin,φ10×14
19	100781073	PR300曲轴箱密封垫	Gasket Inlet Pipe
20	100054647	轴承(6202Z_C3_东培)	Bearing,(6202Z_C3)
21	100780134	PR300左曲轴箱组合(抛丸钝	Left Crankcase Block
22	100104702	CB125脚副轴油封(20×34×7	Oil Seal 20×34×7
23	100106548	平垫圈(φ12.1×2×φ20)	Washer,φ12.1×2×φ20
24	100054898	CG125D放油螺塞(带磁_兰	Oil Drain Plug
25	100104943	CB125脚机油过滤网组合	Strainer Oil Filter
26	100104866	CB125脚机油过滤网弹簧	SpRing,Oil Filter Strainer
27	100107767	O型圈(φ35×3_氟橡胶)	O-Ring,φ35×3
28	100102871	CB125脚气门室盖(抛丸钝	Cover Valve Chamber

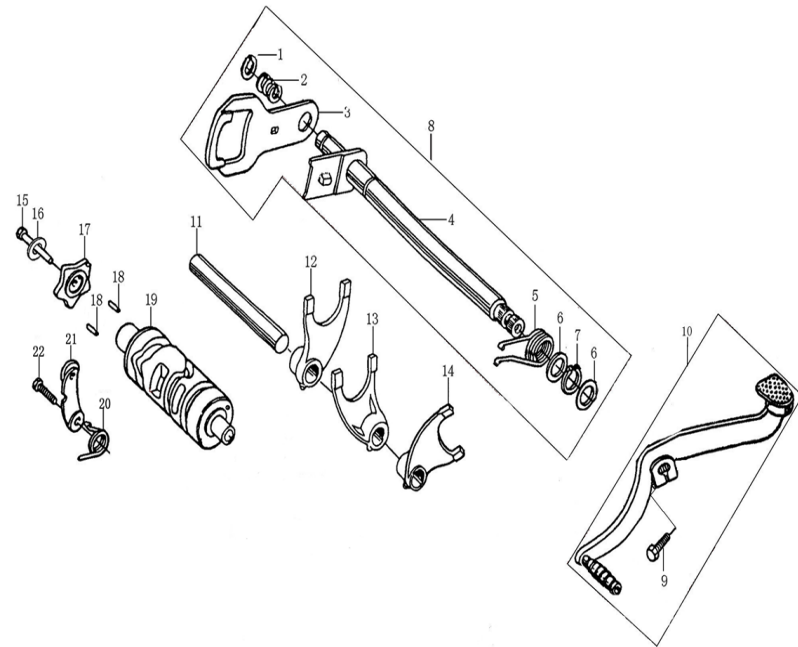


	PART CODE	CHINESE DESCRIPTION	ENGLISH DESCRIPTION
1	100081816	PR250六档主轴组合	Main Shaft Transmission
2	100102589	CBS250六档副轴组合(2#_副轴166)	Coutershaft Transmission
3	100081744	PR250六档主副轴组合(1#_	Transmission Main Counter Shaft
4	100106510	平垫圈($\phi 15.2 \times 1 \times \phi 25$ _工具钢)	Washer, $\phi 15.2 \times 1 \times \phi 25$
5	100102580	CBS250六档主轴二档齿轮	Gear M-2
6	100102582	CBS250六档主轴六档齿轮	Gear M-6
7	100102564	CBS250六档主轴六档齿轮套	Gear Bush
8	100103647	CB125脚齿轮隔圈(17.3(20) $\times 1.6 \times 26$)	Washer, $17.3(20) \times 1.6 \times 26$
9	100103658	CG125D主轴齿轮卡圈	Circlip
10	100102583	CBS250六档主轴三四档齿轮	Gear M-3/4
11	100102563	CBS250六档主轴五档齿轴套	Gear Bush
12	100102581	CBS250六档主轴五档齿轮	Gear M-5
13	100106470	平垫圈($\phi 20.2 \times 1 \times \phi 27$ _弹簧钢)	Washer, $\phi 20.2 \times 1 \times \phi 27$
14	100081746	PR250六档主轴芯轴	Transmission Main Shaft
15	100031911	GB5783螺栓M6 $\times 10$ (兰白锌)	Bolt, M6 $\times 10$
16	100103850	CB125脚主动链轮固定板	Fixing Plate Drive Sprocket
17	100103810	CG125D主动链轮(428.15)	Drive Sprocket
18	100106511	平垫圈($\phi 15.2 \times 1 \times \phi 30$)	Washer, $\phi 15.2 \times 1 \times \phi 30$
19	100102595	CBS250六档副轴2档齿轮	Gear M-2
20	100301853	CBS250六档副轴2档齿轮衬套	Gear Bush



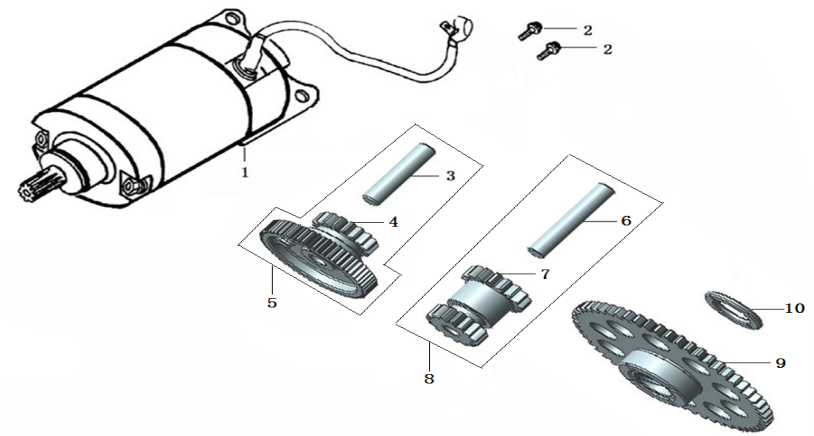
传动机构
TRANSMISSION MECHANISM

	PART CODE	CHINESE DESCRIPTION	ENGLISH DESCRIPTION
1	100011095	GB894.1挡圈12(轴径12_内)	CIRCLIP 12
2	100103978	CG125D换档板弹簧	SpRing, Gearshift Plate
3	100103999	CG125D换档板(五档循环档)	GEARSHIFT PLATE
4	100120242	PR250换档轴芯轴	Gearshift Shaft
5	100103971	CB125脚换档回位弹簧	Return Spring
6	100106402	平垫圈($\phi 14 \times 0.5 \times \phi 20$)	Washer, $\phi 14 \times 0.5 \times \phi 20$
7	100011096	GB894.1挡圈14(轴径14_内)	Retaining Ring, 14
8	100131436	PR250换档臂部件(五档循环)	Gearshift Lever Comp
9	100011174	GB5783螺栓M6×20(白铬)	BOLT M6×20
10	100204007	CG125D变速踏板部件(BT-2)	Gearshift Shaft
11	100103914	CB125脚拨叉轴	Shaft Gearshift Fork
12	100081742	PR250六档副轴右拨叉	Right Fork Countershaft
13	100081740	PR250六档主轴拨叉	Center Fork Mainshaft
14	100081813	PR250五档副轴左拨叉	Left Fork Countershaft
15	100033035	GB5783螺栓M6×22(兰白锌)	Bolt, M6×22
16	100010886	GB93弹垫 $\phi 6$ (白锌)	Washer, $\phi 6$
17	100082850	CBS300六档五星板	Stopping Plate
18	100032886	GB119.1圆柱销 $\phi 4 \times 10$	Pin, $\phi 4 \times 10$
19	100081732	PR250六档变速鼓(六档国际)	Gearshift Drum
20	100203938	CB250六档定位板弹簧	SpRing, Locating Plate
21	100203965	CB250六档定位板组合	Locating Plate Assy
22	100011174	GB5783螺栓M6×20(兰白锌)	Bolt, M6×20



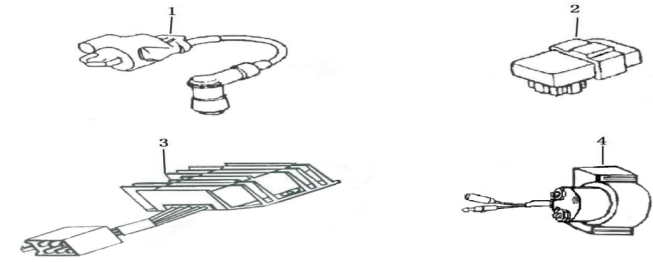
变速机构 GEARSHIFT MECHANISM

	PART CODE	CHINESE DESCRIPTION	ENGLISH DESCRIPTION
1	100081750	PR250启动电机(单线_圆形_510_机座钝化_机壳兰白锌)	Starting Motor Assy
2	100011269	GB5789螺栓M6×28(兰白锌)	Bolt, M6×28
3	100103228	CB125D双联齿轮轴	Shaft Reduction
4	100054759	PR150双联齿轮(一)	Gear Reduction 1
5	100054758	PR150双联齿轮组合(一)	Gear Reduction 1
6	100054756	PR150双联齿轮轴	Shaft Reduction
7	100054757	PR150双联齿轮(二)	Gear Reduction 2
8	100054755	PR150双联齿轮组合(二)	Gear Reduction 2
9	100054752	PR150启动大齿轮组合	Ate Gear Assy
10	100050417	CB125D盘形齿垫圈(3#_φ22)	Washer,φ22×2.5×φ34



电启动机构
ELECTRIC STARTING MECHANISM

	PART CODE	CHINESE DESCRIPTION	ENGLISH DESCRIPTION
1	100204266	高压包(MG03B_L:500)	Ignition Coil
2	100726138	CB250RL点火器(直流_DCI-Z)	C.D.I
3	100205413	整流调压器(全波_MT12V8)	Rectifier
4	100205381	继电器(MQJ10-ZS01A)	Relay



电器件 ELECTRIC